

Enhance your in vitro models with our primary human hepatic cells to recapitulate normal or MASH/MASLD phenotypes.

Advanced Drug Metabolism Studies:

- Understand the impact of nonparenchymal cells on drug metabolism pathways.
- Assess drug interactions and responses in a more physiologically relevant context.

Disease Modeling:

- Uncover the cellular mechanisms behind MASH (MASH)/MASLD progression.
- Develop and test drugs targeting nonparenchymal cell-mediated pathways.

Build Physiological Models:

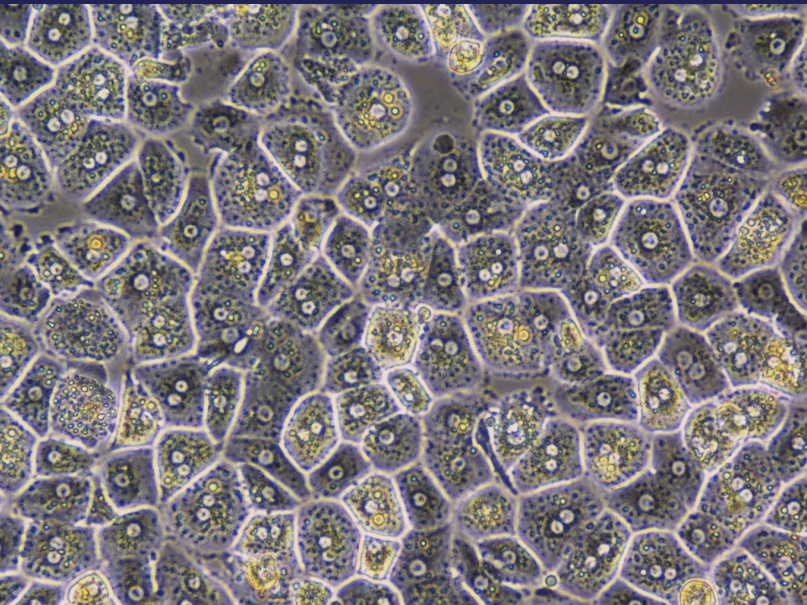
- Build more realistic in vitro liver models by incorporating primary nonparenchymal cells.
- Achieve a higher level of accuracy in predicting drug responses and toxicities.

Improved Predictive Power:

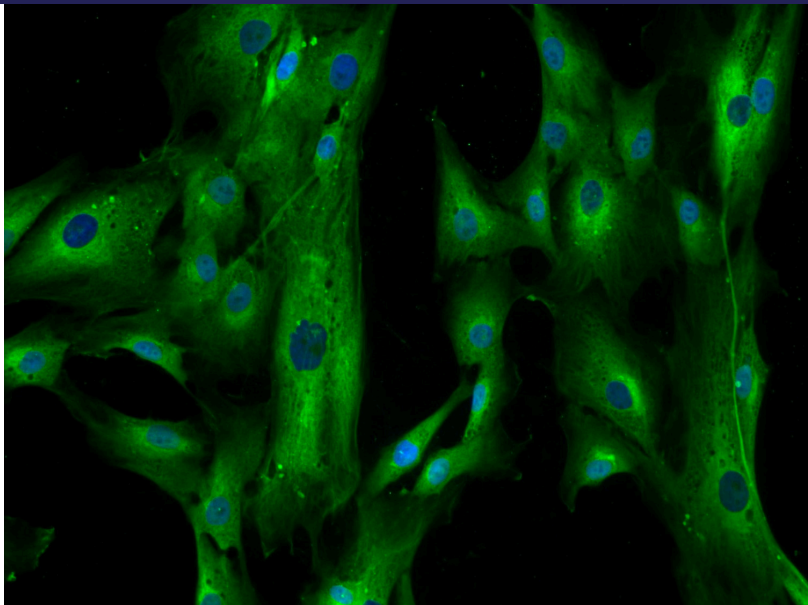
- Enhance the predictability of drug responses in complex liver environments.
- Identify potential challenges early in the drug development process.

Donor-Matched Cells Available for both Healthy and MASH/MASLD!

Primary Human Hepatocytes form bile canaliculi 12 hours post-thaw.



Activated Hepatic Stellate Cells express glial fibrillary acidic protein.



Mosaic Cell Sciences provides healthy and MASH/MASLD hepatocytes and nonparenchymal cells with exceptional post-thaw yield and post-thaw viability to produce high fidelity models of liver function and drug metabolism. Batch specific information provided with all of cell solutions.

Primary Human Hepatocytes

Product	Description (Available as healthy or MASH/MASLD)
120803-03	Human hepatocytes - cryopreserved. 5-10 x 10 ⁶ viable cells/vial
120803-06	Human hepatocytes - fresh plated. 5-10 x 10 ⁶ viable cells/vial
120803-19	Human hepatocytes - suspension. 5-10 x 10 ⁶ viable cells/vial

Other Hepatic Solutions

Product	Description (Available as healthy or MASH/MASLD)
120503-03	Human liver endothelial cells - cryopreserved. 1x10 ⁶ cells/vial
121103-03	Human liver stellate cells - cryopreserved. 1x10 ⁶ cells/vial
121903-03	Human liver kupffer cells - cryopreserved. 1x10 ⁶ cells/vial
120606	Human liver tissue - formalin fixed
121906	Human liver tissue - snap frozen

Connect with our experts to address your primary human cell validation and characterization requirements!

 619-407-8332

 Info@mosaiccellsci.com

Organovo 12160808-01

© 2024 Mosaic Cell Sciences,
a division of Organovo 12160808-01



Visit us online to learn more!

www.mosaiccellsci.com